

2024/2025

PROSPECTUS



OUDTSHOORN CAMPUS



CONTACT DETAILS

MAIN CAMPUS: OUDTSHOORN

Enquiries: 044 272 8884
After-hours: 060 553 8888
Fax: 044 272 8382
Office hours: 07:30-16:00

INFO@EMMANUEL.AC.ZA
WWW.EMMANUEL.AC.ZA

CAMPUS ADDRESS
69 Jubilee Street, Oudtshoorn, 6625

POSTAL ADDRESS
PO Box 1148, OUDTSHOORN, 6620

HEAD OFFICE: PRETORIA

Enquiries: 012 361 8628
After-hours: 082 559 6247
Fax: 086 681 9105
Office hours: 07:30-16:00

INFOPTA@EMMANUEL.AC.ZA
WWW.EMMANUEL.AC.ZA

PHYSICAL ADDRESS
153 Grant Street, Queenswood x2
Pretoria, 0186

POSTAL ADDRESS
Postnet Suite 107, Private Bag x21,
Queenswood, 0121

TABLE OF CONTENT

- 1 | MESSAGE FROM THE PRINCIPAL
- 2 | DIRECTORS, MANAGEMENT & STAFF
- 4 | MISSION, VISION, GOALS, COURSEWARE & PLACEMENT
- 5 | RULES AND CLINICAL HEALTH FACILITIES
- 6 | NURSING AS A CAREER
- 7 | 3-YEAR DIPLOMA IN NURSING (GENERAL NURSE) R.171
- 9 | 1-YEAR HIGHER CERTIFICATE IN NURSING (AUXILIARY NURSE) R.169
- 11 | APPLICATION & SELECTION
- 12 | PAYMENT & FEES
- 13 | FREQUENTLY ASKED QUESTIONS
- 14 | 2024 STUDENT REPRESENTATIVE COUNCIL
- 15 | STUDENT LIFE AT EMMANUEL
- 16 | CAMPUS MAP

SCAN THE QR CODES WITH YOUR SMARTPHONE



WEBSITE



FACEBOOK



Dear prospective student,

At Emmanuel Verpleegskool, we salute every Prospective student!

You will set yourself apart from other professions, the moment you apply at our school.

You will not look back and the path before you will be open and transformative.

"Each profession has unique characteristics and traditions determined by its practitioners.

A profession refers to a specific career where work of an intellectual nature is performed.

This career makes a public statement in respect of its uniqueness, the career-specific training, education required, as well as the career specific values and norms that are pursued." Muller & Bester, 2018:10

The Emmanuel team of Lecturers are looking forward to walking this transformative path with you and we promise you that you will not regret your choice to become part of our Nursing Profession.

The South African Nurses' Credo states the following:

Nursing is a belief...

Nursing is faith...

Nursing is assistance and support...

Nursing is the therapeutic use of self...

It is love that is made visible.

I invite you to come and help the Nursing Profession to spread this love. ♥

Head of College (Oudtshoorn)

MS. LINDA JANSEN VAN RENSBURG

Diploma in General Nursing, Psychiatry; Midwifery and Community Health Nursing (UFS), Intensive Care Nursing (FSSON), Diploma in Health care Management and Nursing Education (UNISA), Assessor and Moderator (SANC)

Directors, chief executive and senior management



Mr. Rudolf Martinus Nel
(CEO)



Mr. William Frederik de
Beer (CFO)



Dr. Yolandè Winson
(COO)

Academic staff

Principal



Ms. L Jansen van Rensburg
[Diploma in General Nursing, Psychiatry; Midwifery and
Community Health Nursing (UFS), Intensive Care
Nursing (FSSON), Diploma in Health care Management
and Nursing Education (UNISA), Assessor and
Moderator (SANC)]

Lecturing Modules:
General Nursing Science, GNS100
SIM: GNS200

Vice-Principal



Ms. H Bothma
[B Soc Sc and Hons Soc Sc - General Nursing,
Psychiatry, Community Health Nursing and Midwifery
(UFS), M Soc SC - Critical Care Nursing and Nursing
Education (UFS), Assessor and Moderator (SANC)]

Lecturing Modules:
General Nursing Science, GNS200
Pharmacology, PHARM200

Lecturers



Ms. K Cupido

[Diploma in General Nursing and Midwifery (Tygerberg Nursing College), M Cur (US), Nursing Education (US), Primary Health Care and Nursing Management (US), Assessor and Moderator (SANC)]

Lecturing Modules:

Community and Reproductive Health Care, CRN100, CRN200
Reproductive Health Care, RHC300
Basic Nursing Care, BNC100
Community Health Science, CHS100



Ms. J Nel

[Diploma in General Nursing, Community Health Nursing, Midwifery and Psychiatry, (Ann Latsky Nursing College), B Cur Nursing Education and Management (UNISA), Assessor and Moderator (SANC)]

Lecturing Modules:

Nursing Dynamics, NDY100, NDY200
SIM: GNS100, GNS300
Transcultural Nursing, Communication, Professionalism and Ethics, PP100



Ms. A Murray

[Diploma in General Nursing and Midwifery (SG Lourens Nursing College), Diploma in Community Nursing Science (UP), Assessor & Moderator (SANC)]

Lecturing Modules:

Biomedical Sciences, BMS100, BMS200
Biomedical Sciences & Pharmacology, BMP100



Dr. M Wilke

[Bachelors in Social Science (Nursing) (UFS), Master of Nursing (UJ), Ph.D (Nursing) (UFS), Advanced University Diploma in Nursing Education (UFS), Postgraduate Diploma in Public Health (UNISA), Assessor and Moderator (SANC)]

Lecturing Modules:

Health Information Systems, HIS200 & HIS300



Ms. L van der Veen

[Diploma in General Nursing, Community Health Nursing, Psychiatry and Midwifery (SG Lourens Nursing College), B Cur I et A (UP), Diploma in Nursing Education and Administration (UP), Emergency Nursing (UP), Assessor and Moderator (SANC)]

Lecturing Module:

Sociology & Psychology, SP100



Dr. E le Roux

[Diploma General Nursing (S.G Lourens Nursing College), Diploma in Midwifery (S.G Lourens Nursing College), Diploma in Intensive Care Nursing (J.G. Strijdom Hospital) B.A. Cur (UNISA), BSc (City University London), Principles and methods of Research (University of South Africa), M Cur (UNISA), PhD (UNISA)], Assessor (SANC)

Lecturing Modules:

Nursing Management, NM200 & NM300

MISSION

Emmanuel Nursing Verpleegskool aspires to become a beacon of academic excellence in nursing education, offering transformative learning experiences that foster a culture of compassion, dignity, and continuous growth. We aim to cultivate a legacy of lifelong learning, leadership, and dedicated service to diverse communities.

VISION

Emmanuel Verpleegskool is dedicated to the development of highly skilled and ethically grounded nurses who adhere to the Code of Ethics for Nursing Practitioners in South Africa. Our nursing programs are designed to create a person-centered learning environment, equipping students not only to excel as healthcare professionals but also to emerge as future healthcare leaders.

GOALS

- To give learners the opportunity to gain knowledge, skills and professional behaviour in their profession as nurse.
- To give learners equal opportunity towards a career in nursing.

The learner develops personally and professionally and on completion of the course, should be able to:

- Recognise and respect people's values and needs.
- Realise that social and cultural influences and physical situations are connected to human behaviour and health.
- Know and apply the applicable laws.
- Accept the ethical and moral rules of nursing.
- Accept that nursing is involved with all stages of the human life.
- Be able to help individuals and groups with nursing care as part of a nursing regimen.
- Know the place of the learner nurse in the health team providing healthcare.
- Work as a member of the multidisciplinary health team.
- Know your responsibility regarding the promotion of bodily and emotional needs of the human and be able to practically apply knowledge and skills.

Our courses and courseware structure

Our courses have a theoretical and practical component. Learners are expected to take responsibility and accountability for their own studies as the programme is based on the principles of outcomes-based-education, or adult learning as it is also referred to.

Initial learning takes place in the classroom environment and practical procedures are demonstrated to learners prior to attending clinical facilities.

Once competent, learners are placed in clinical facilities such as hospitals, retirement villages and frail-care units and clinics. There they are provided the opportunity to apply the foundational and procedural knowledge they have obtained in the classroom in the clinical environment, under the supervision of a registered nurse acting as a mentor for learners.

Theoretical and practical training and placement

Theoretical training will take place in Oudtshoorn on the campus. Practical training, however, may be done in Oudtshoorn and surrounding areas, including but not limited to George, Knysna, Mosselbay, Ladismith and Riversdale, as agreed to by both parties and subject to availability of accredited facilities. A comprehensive list of these clinical facilities is provided on the next page. Emmanuel Verpleegskool will always try to place students closest to the areas where they reside or have alternative accommodation available. However, this may not always be possible and therefore students may incur extra costs (travel & accommodation) to fulfil their practical training requirements. It is important that you note of this and plan accordingly. No changes can be made to practical placements, once it has been completed.

Language policy

All teaching and communication are done in English.

RULES RELATING TO ASSESSMENT, ACADEMIC CREDIT ACCUMULATION, PROGRESSION AND QUALIFICATION

Continuous evaluation is done through written tests, written examinations, case studies, tasks, marking of workbooks, procedures and practical ward rounds.

The student is required to achieve a participation mark of at least 90% and an aggregate of 50% per module to be admitted to the examination of the module concerned.

A theory examination mark of 50% per module is required to pass the examination. Students are also required to achieve specific clinical objectives within a specific time span.

Students may maintain credit for the theoretical / practical portions of the programme passed if they have to repeat the year. Students will need to fulfil all requirements to complete the study year and obtain the final qualification. Qualifications reflect the respective NQF level, number of credits, outcomes and assessment criteria. This ensures that the credits earned by successful candidates could count towards national South African Qualifications Authority (SAQA) registered qualifications and might be considered for recognition of prior learning (RPL), thereby opening opportunities for further learning.

Emmanuel Verpleegskool has service level agreements with the following clinical health care establishments (as accredited by the SANC):

- Bongoletu Community Health Clinic, Oudtshoorn
- Kwanokuthula Clinic Knysna
- Bridgton Community Health Clinic, Oudtshoorn
- Oudtshoorn Aftree-oord
- Klein Karoo Medi-clinic Hospital, Oudtshoorn
- Helen Bellinganhof Old Age Home, Oudtshoorn
- JJ Watson Home George
- Kannaland Mediese kliniek / Kango clinic, Oudtshoorn
- D'Almeida Clinic, Mosselbay
- Great Brak Clinic
- Intercare George
- Knysna CDC
- Life Bayview Hospital, Mosselbay
- Oudtshoorn Provincial Hospital
- Mosselbay Provincial Hospital
- Riversdale Provincial Hospital
- Knysna Provincial Hospital
- Alan Blyth Hospital Ladismith
- Oudtshoorn Community Health Clinic

NURSING AS A CAREER

The nursing profession is regarded as the backbone of healthcare, as nurses are at the forefront of healthcare delivery.

Nursing entails preventive, promotive, curative and rehabilitative health throughout a lifespan - from birth to death. A nurse deals with many conditions and cases, including trauma, maternity, paediatrics, gynaecology, surgical and medical conditions, among many others. Nursing is a science and an art, involving both theory and practical work in the different practical settings, for example clinics, community health centres, hospitals of different types and sizes, hospices, et cetera.

Working as a nurse means you will be working shifts, long hours and night duty, dedicated solely to the well-being of the patients in your care. You will also work closely with other health professionals such as Doctors, Physiotherapists, Occupational Therapists and Dieticians, to mention a few.

The value of a true nurse lies in the ability to show respect for human life and dignity, social justice and integrity, and total commitment to patients and other healthcare users

If you are that person, the nursing profession is awaiting you.

**WATCH THIS VIDEO TO
FIND OUT IF NURSING IS
THE CAREER FOR YOU**



START YOUR CAREER AT EMMANUEL

Emmanuel Verpleegskool (Pty) Ltd. (2006/022426/07) is a private company registered in terms of the Companies Act, 2008 (Act 71 of 2008, as amended).

Emmanuel Verpleegskool is registered with the Department of Higher Education and Training as a private higher education institution under the Higher Education Act, 1997. Registration certificate no. 2018/HE07/005.

Our qualifications are registered with the South African Qualifications Authority (SAQA) on the National Qualifications Framework (NQF).

Our higher education learning programmes are accredited by the Higher Education Quality Committee (HEQC) of the Council on Higher Education (CHE) and the South African Nursing Council (SANC).

3-YEAR DIPLOMA IN NURSING (GENERAL NURSE) R.171 NQF LEVEL 6 (SAQA ID 117037)

General Nurses function as clinically focused, service orientated, independent healthcare providers. The practice of the General Nurse is evidence-based and focusses on quality service delivery within a broad spectrum of health services in a variety of settings, including community settings.

This qualification provides a basis for decision-making about what is within and beyond the defined scope of practice, as well as an understanding of the referral system in place for anything outside of the scope of practice.

The nurse who completes this qualification will be able to:

- Maintain professionalism
- Apply knowledge of biomedical, biotechnological and psycho-social sciences to the practice of nursing
- Develop, implement and evaluate population-based health care
- Assess, plan, implement and evaluate nursing care for individuals and groups with stable, uncomplicated health problems based on thorough assessment
- Deliver nursing care to sick or disabled individuals and groups with stable uncomplicated health problems
- Promote rehabilitation of individuals and groups with disabilities
- Diagnose and treat minor ailments
- Deliver safe maternal care
- Manage a health care unit
- Utilise principles of science and methodology in investigating nursing and health-related problems

Learning assumed to be in place

Access to this qualification is subject to holding a National Senior Certificate or an equivalent qualification at exit level 4, which includes:

- Communication skills level 4
- Mathematical Literacy level 4
- Life Sciences level 4
- Computer Literacy level 3

Recognition of prior learning (RPL)

Please note that there is no RPL for candidates that have Home-base Care qualifications.

Should a learner wish to apply for Recognition of Prior Learning (RPL) for access to this qualification or credit-bearing exemptions, an application must be submitted to Emmanuel Verpleegskool for individual assessment. No more than 50% of programme content will be accredited through the RPL policy as per CHE/SANC guidelines.

Outcomes of the programme as set out by the South African Nursing Council

- Provide nursing care throughout the lifespan in various healthcare settings
- Render nursing care within a legal and ethical framework
- Apply knowledge of natural and biological sciences in the practice of nursing
- Apply knowledge of psycho-social sciences in the practice of nursing
- Apply knowledge of pharmacology in nursing practice
- Use and maintain healthcare information systems for nursing practice
- Manage a healthcare unit by implementing the management process
- Provide reproductive healthcare to promote and maintain optimum health of individuals and families

R.171 consists of the following modules:

- Biomedical Sciences (BMS100, BMS200)
- Sociology & Psychology (SP100)
- Pharmacology (PHARM200)
- General Nursing Science (GNS100, GNS200, GNS300)
- Community and Reproductive Health Nursing (CRN100, CRN200)
- Nursing Dynamics (NDY100, NDY200)
- Reproductive Health Care (RHC300)
- Nursing Management (NM200, NM300)
- Health Information Systems (HIS200, HIS300)

Minimum admission requirements

Access to this qualification is a National Senior Certificate with exemption to Diploma studies with the appropriate selection of subjects, preferably:

- Biology/Life Sciences (at least D symbol / 50%)
- English Home Language or First Additional Language (at least D symbol / 50%)
- Maths literacy (at least D symbol / 50%) or Maths (at least E symbol / 40%)
- A score of at least 19 points on the scoring scale set out below as achieved in the National Senior Certificate (thus APS \geq 19) in the applicant's best 6 (six) subjects (excluding Life Orientation)

Applicants who hold a qualification other than the National Senior Certificate, an NC (V) or a foreign qualification evaluated by SAQA should contact the school for the calculation of their APS.

Grade 12 subject %	Grade 12 subject symbol (Higher Grade)	Grade 12 subject symbol (Standard Grade)	Achievement level	Points to calculate overall APS
80-100	A		7	7
70-79	B	A	6	6
60-69	C	B	5	5
50-59	D	C	4	4
40-49	E	D	3	3
30-39	F	E	2	2
0-29	G	F	1	1

The duration of the programme is three (3) academic years. One academic year consists of at least 44 weeks of full-time study.

The course consists of 364 credits, of which 200 credits must be acquired in accredited clinical facilities. Of your clinically acquired credits, 70% are supervised and mentored by registered nurses and/or clinical facilitators. Integrated learning will comprise 1600 hours' work done in a clinical skills laboratory or other work-based clinical experience. 1 credit = 10 notional hours.

Learners need to successfully complete each year to be able to progress to the next year and must complete the whole program to obtain the qualification of General Nurse. Fundamental subjects can be carried to the next year, but core subjects must all be passed.



1-YEAR HIGHER CERTIFICATE IN NURSING (AUXILIARY NURSE) R.169 NQF LEVEL 5 (SAQA ID 119026)

Auxiliary Nurses are capable of delivering essential, skilled basic nursing care in a variety of healthcare settings. They combine nursing care with prevention and promotion - which makes this first-level nurse's role that of a strong primary healthcare worker. This qualification signifies that the learner has attained a basic level of higher education knowledge and competence in nursing and is capable of applying such knowledge and competence in the workplace.

The nurse who completes this qualification will be able to:

- Apply knowledge of theory and practice of basic nursing care
- Assess, plan, implement and evaluate basic nursing care for individuals and groups throughout the life span
- Demonstrate professionalism when rendering basic nursing care

On successful completion of this qualification, the graduate is eligible for registration with the South African Nursing Council as an Auxiliary Nurse. The Auxiliary Nurse works under the supervision of a nurse with a National Diploma or Degree in Nursing within their applicable scope of practice. This basic knowledge, affective-, cognitive- and conceptual tools and practical skills obtained as part of this qualification prepares the Auxiliary nurse for additional higher education studies in nursing.

Learning assumed to be in place

Access to this qualification is subject to holding a National Senior Certificate or an equivalent qualification at exit level 4, which includes:

- Communication level 4
- Mathematical Literacy level 4
- Life Sciences level 4
- Computer Literacy level 3

Recognition of prior learning (RPL)

Please note that there is no RPL for candidates that have Home-base Care qualifications.

Should a learner wish to apply for Recognition of Prior Learning (RPL) for access to this qualification or credit-bearing exemptions, an application must be submitted to Emmanuel Verpleegskool for individual assessment. No more than 50% of programme content will be accredited through the RPL policy as per CHE/SANC guidelines.

The outcomes of the programme as set out by the South African Nursing Council are:

- Apply basic knowledge of anatomy, physiology, biophysics, pharmacology and microbiology in the provision of nursing care
- Communicate effectively in various ways in the nursing context
- Use the scientific nursing approach to address the basic needs of individuals and groups in various healthcare settings.
- Demonstrate appropriate methods of interacting sensitively and professionally with individuals from diverse backgrounds
- Maintain professionalism in nursing practice within the ethico-legal framework
- Participate in addressing the needs of individuals and groups in a community

R.169 consists of the following modules:

- Biomedical Sciences & Pharmacology (BMP100)
- Basic Nursing Care (BNC100)
- Transcultural Nursing, Communication, Professionalism and Ethics (PP100)
- Community Health Nursing (CHS100)

Minimum admission requirements

Access to this qualification is a National Senior Certificate with exemption to Higher Certificate studies with the appropriate selection of subjects, preferably:

- Biology/Life Sciences (at least D symbol / 50%)
- English Home Language or First Additional Language (at least D symbol / 50%)
- Maths literacy (at least D symbol / 50%) or Maths (at least E symbol / 40%)
- A score of at least 16 points on the scoring scale set out below as achieved in the National Senior Certificate (thus APS \geq 16) in the applicant's best 6 (six) subjects (excluding Life Orientation)

Applicants who hold a qualification other than the National Senior Certificate, an NC (V) or a foreign qualification evaluated by SAQA should contact the school for the calculation of their APS.

Grade 12 subject %	Grade 12 subject symbol (Higher Grade)	Grade 12 subject symbol (Standard Grade)	Achievement level	Points to calculate overall APS
80-100	A		7	7
70-79	B	A	6	6
60-69	C	B	5	5
50-59	D	C	4	4
40-49	E	D	3	3
30-39	F	E	2	2
0-29	G	F	1	1

The duration of the programme is one (1) academic year. One academic year consists of at least 44 weeks of full-time study.

The course consists of 120 credits, of which 72 credits must be acquired in accredited clinical facilities. Of your clinically acquired credits, 70% are supervised and mentored by registered nurses and/or clinical facilitators. Integrated learning will comprise 720 hours' work done in a clinical skills laboratory or other work-based clinical experience. 1 credit = 10 notional hours.

APPLICATION

To be considered for Emmanuel Verpleegskool's 2025 enrolment, you can apply directly through KR Education at www.kreducationsa.com. Applications are open throughout the year and will close once maximum student numbers have been reached. Only students who meet the statutory and college-specific admission requirements can apply to study at Emmanuel Verpleegskool. Should you require additional assistance, please WhatsApp the KR Education team on 064 508 3892 or email them at registrations@kreducation.co.za for a prompt response. An application fee (non-refundable) is payable directly to KR Education.

You can also apply directly to the school via Email: info@emmanuel.ac.za or WhatsApp: 0605538888

SELECTION

It is important to note that you will not be automatically accepted to study through Emmanuel Verpleegskool. Students will be accommodated on the basis of the number of available spaces for the qualification.

The selection process will be conducted in 2 phases.

Phase 1:

Phase 1 will be done by the KR Education team or directly via the school. Applications will undergo a sifting process based on academic scoring and screening tests. A shortlist of candidates will be provided to Emmanuel Verpleegskool, if applied through KR Education.

Phase 2:

Shortlisted candidates will be invited for a face-to-face interview with the Recruitment and Selection Committee. Psychometric tests will also be conducted on the day of the interview. This date will be communicated directly to the candidate. All candidates will be informed of the outcome within 2 weeks after completion of Phase 2.

STUDENT CONTRACT

Every student is required to sign the school contract that will be sent together with their notice of acceptance to study at Emmanuel Verpleegskool. A copy of this contract will be provided to the student while the original document is kept in the student's administration file. It is the responsibility of each student to familiarise themselves with this contract.

PHYSICAL DISABILITIES

A high degree of physical capabilities is required from students wishing to enrol for a nursing qualification. For this reason, the school can unfortunately not consider applicants with any physical constraints. Applicants who wish to apply and are in doubt in this regard are invited to discuss their situation telephonically with the principal. The school may request the production of a medical certificate relating to the applicant's condition.

PLEASE NOTE:

Current matriculants may be made a conditional offer of acceptance based on their Grade 11 results. Conditional offers can only be confirmed upon receipt of the learner's final matric results.

PAYMENT & FEES

Application fee

An application fee (non-refundable) is payable directly to KR Education when you submit your application on the KR Education webpage. Pricing is available on their website.

Tuition fees & payment method

Tuition fees are payable directly to Emmanuel Verpleegskool by direct deposit only. No cash payments are accepted on campus.

Emmanuel Verpleegskool banking details

Emmanuel Verpleegskool, Oudtshoorn Campus
ABSA Cheque Account
Account number 4066171649
Branch code 632005
Reference: Name and Surname or Student number

Payment terms

Auxiliary nursing & First-year Diploma students: A 25% deposit is due within 4 weeks of receiving your letter of acceptance to study at Emmanuel Verpleegskool. Thereafter, 8 equal, consecutive monthly instalments cover the balance. The due dates for these instalments will be stipulated on your letter of acceptance. A discount of 5% applies if the full course fee is settled in one payment on or before the deposit due date. A discount of 2.5% applies if the course fee is settled in two payments, the first of which is on or before the deposit due date and the second by no later than the second month's instalment date.

Second & Third-year Diploma students & year-repeaters in both programmes: A 25% deposit is due by 10 December 2024. Thereafter, 8 equal, consecutive monthly instalments cover the balance (Jan - Aug). A discount of 5% applies if the full course fee is settled in one payment on or before the deposit due date. A discount of 2.5% applies if the course fee is settled in two payments, the first of which is on or before the deposit due date and the second by no later than the second month's instalment date.

Cancellations

ANY NOTICE OF TERMINATION OF STUDIES RECEIVED BY THE SCHOOL AFTER 3 JANUARY 2025 WILL RESULT IN A CANCELLATION FEE PAYABLE TO THE SCHOOL EQUAL TO THE FEE FOR THE YEAR. DEPOSITS ARE NOT REFUNDABLE

Course	Total Course Fee	Deposit	Balance To Be Paid	Monthly Instalments	Number of Instalments
Auxiliary Nurse R.169 1-year Higher Certificate in Nursing	R70,800	R17,700	R53,100	R6,637.50	8
General Nurse R.171 3-year Diploma in Nursing	1st Year R72,600	1st Year R18,150	1st Year R54,450	1st Year R6,806.25	1st Year 8
	2nd Year R74,200	2nd Year R18,550	2nd Year R55,650	2nd Year R6,956.25	2nd Year 8
	3rd Year R79,800	3rd Year R19,950	3rd Year R59,850	3rd Year R7,481.25	3rd Year 8

Please note that failure to use correct reference will delay update of your statement and account. No late payments are allowed. If the payment schedule is not adhered to, your studies may be terminated. Prevent a delay in updating your records by ensuring that your payment is cleared before or on each payment date.

Fees include 1st year registration fees, professional indemnity, Basic Life Support Course, SANC registration as a student and professional registration with SANC after graduation. Fees exclude SANC examination fees (if reinstated), textbooks, uniforms, traveling, accommodation, extension/repeat module fees, supplementary assessments, graduation attire rental and graduation photographs. Students who lose their student card will need to pay R200 for a new one.

Students taking supplementary examinations will be charged R850 per practical and/or theoretical examination. Students who request a re-mark on a summative assessment will be charged R850 per script. Request for the following documents are subject to an administration fee, excluding postage fees: Academic record/transcript R500.

FREQUENTLY ASKED QUESTIONS

Can I enrol for the 3-year programme immediately without doing the 1-year course?

Yes, candidates who have met the selection criteria can enrol into the 3-year programme and do not necessarily have to progress from the 1-year course.

What is the meaning of a SAQA number?

All qualifications accredited with CHE and SANC need to be registered at SAQA. A unique qualification code is then attached to each accredited qualification.

Why is the content of the programme so difficult?

In nursing, one has to achieve a minimum aggregate of 50% for theory and 50% for practical assessments in order to obtain the qualification. Should you either fail practical or theory, the qualification will not be awarded. All nursing qualifications are registered and accredited under the higher education framework, and the level connected to the qualification indicates the level of difficulty attached to it, i.e. the 1-year programme being on NQF level 5.

Can I enrol for this course through distance/after-hours learning?

Unfortunately not, as nursing programmes are developed to be delivered through contact sessions and practical placement is supervised and monitored.

Do you provide learnerships or bursaries?

Unfortunately not, but we can refer you to reputable financial institutions where you can obtain a study loan.

Can the classes be presented in Afrikaans?

Unfortunately not. English is the teaching and communication medium in the school, and all assessments and examinations will be conducted in English only.

Does Emmanuel Verpleegskool provide accommodation? If not, would the school be able to help me find accommodation?

No, the school does not provide accommodation. The school can, however, provide you with a list of options to choose from. The school cannot be held liable for any issues that may arise between landlords and students.

Does Emmanuel Verpleegskool provide for travel and accommodation close to clinical training facilities?

Although Emmanuel Verpleegskool will always try to place students closest to the areas where they reside or have alternative accommodation available, this may not always be possible and therefore students may incur extra costs (travel & accommodation) to fulfil their practical training requirements.

Do I have a choice as to where I am going to work - hospital, clinic or old age home?

Learners have to gain experience in a variety of settings and therefore will be required to complete practical hours in different settings.

Does Emmanuel Verpleegskool provide uniforms and textbooks?

Textbooks must be ordered directly at the school. Emmanuel Verpleegskool has specific uniforms that can be purchased from the school. Uniforms are compulsory and a minimum of two sets will be required. The costs of textbooks and uniforms are not included in the course fees. A separate order form will be provided to students for these items. Payment must be made upon order.

Will I be expected to work on my own in the hospitals and other practical settings?

A facilitator or mentor will orientate you to the health facility, and will work with you for at least one day per week. The rest of your practical hours will be completed under the supervision of the registered nurses in the healthcare facility.

What happens if my child or I am sick and I have to go to the hospital?

You will have to contact the school and/or healthcare facility immediately to report that you or your child is sick. Leave can be taken in accordance with the School's student leave policy. You will have to complete your practical hours in your private time.

What happens if I cannot make a monthly payment?

You must, immediately (before the payment is due), notify the finance officer and make an arrangement whereby you commit to and explain how and when payment will be made.

Will we have access to the internet to do research?

Yes, the internet is available in all areas at the school.

I have little or no internet experience. Will somebody be able to help me?

Yes, the librarian will be able to help you become computer literate.

**Not finding the answers you are looking for?
Contact our student support centre directly:**

**Oudtshoorn: 044 272 8884 or
info@emmanuel.ac.za**

STUDENT REPRESENTATIVE COUNCIL: MEET YOUR 2024 SRC



Elzaan Davel
PRESIDENT



Evette Brown
DEPUTY PRESIDENT



Vera-Marie Fourie
SECRETARY



Sydney Swanson
SOCIAL OFFICER



Erin Grispe
FACILITIES, SAFETY AND
SECURITY OFFICER



Janke Steenberg
CLASS REPRESENTATIVE R.171
THIRD YEARS



Mieke Schoeman
CLASS REPRESENTATIVE R.171
THIRD YEARS



Deidre Bakers
CLASS REPRESENTATIVE R.171
SECOND YEARS



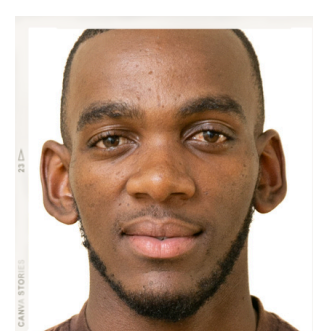
Saschia van Wyk
CLASS REPRESENTATIVE R.171
SECOND YEARS



Zanele de Villiers
CLASS REPRESENTATIVE R.171
FIRST YEARS



Dominique Piper
CLASS REPRESENTATIVE R.171
FIRST YEARS



Masixole Tani
CLASS REPRESENTATIVE R.169



Zukisa Nyoka
CLASS REPRESENTATIVE R.169

STUDENT LIFE AT EMMANUEL

As a learner nurse, it is important to show your leadership skills and abilities to make a difference in the life of others. Participation in an Emmanuel Verpleegskool committee offers you the chance to develop and improve on these skills. It is not always the most outspoken learner who has the best skills and experience to serve on such committees. Individuals who are shy and soft-spoken but have the eagerness to improve themselves are encouraged to join the committees so as to improve their overall skills. Certain committee members are selected by fellow learners whilst some will be appointed by the academic staff. Learners who served on any of the school's committees will receive a certificate upon completion of training, which will enhance the impact of their CVs in their job seeking efforts.

Student Representative Committee (SRC)

As determined by the Department of Higher Education and Training, Emmanuel Verpleegskool has its own student committee in place. The selected learners liaise between staff and learners. A meeting, led by the President, is held once per month. Minutes are recorded by the secretary.

Health and Safety Committee

The Health and Safety Committee will do a monthly health and safety inspection and risk assessment of the school and present their findings to the Principal. The Facilities, Safety, and Security Officer of the SRC serves on this committee.

Fundraising

Learners at Emmanuel Verpleegskool are encouraged to develop their entrepreneurial skills by participating in fundraisers organised by the SRC. Lecturers will assist only in an advisory capacity.

Financial aid

Students are to finance their studies from own resources as there is currently no financial aid available to students.

Support networks

- Library for research
- Simulation facility for practical learning
- Academic and psychological support services are in place on campus. Lecturers are available for 1:1 support sessions. Students who require professional counselling will be referred accordingly.



Academic rules

Comprehensive academic rules and code of conduct policies will be shared with students during the orientation week. You may also obtain a copy from the administrative office.

Student complaints

Students will receive a comprehensive policy and procedures document during orientation week. Should you require this earlier, you may obtain a copy from the administrative office.

Health & wellness

All students are required to be fully immunised against Hepatitis B and Covid-19 prior to commencement of studies. Proof of vaccination must be provided to Emmanuel Verpleegskool by 1 December 2024.

Identity & library cards, uniforms and epaulette protocol

Identity and library cards are supplied by Emmanuel Verpleegskool and must always be worn. Epaulettes will be supplied to learners and worn as part of the uniform. Uniforms are prescribed by and obtainable only through Emmanuel Verpleegskool's admin department. The identity card, which forms part of the uniform, must be worn during practical.

Choosing a career path

All learners registered with Emmanuel Verpleegskool must feel free to consult with an academic staff member to help determine and plan the best career path for them. Learners who do not wish to continue with their studies upon the completion of their training at Emmanuel Verpleegskool may register with Procure Temporary Employment Services (Pty) Ltd. to seek placement through the agency. Interested individuals will be referred to a Procure consultant, who will explain the registration and placement process to them in further detail.

CAMPUS MAP

